

INDEX OF SHEETS

SHEET NO.	TITLE PAGE
" " 211-212	TYPICAL CROSS SECTIONS (R2) SHEET 211
" " 213	TYPICAL JOINT LAYOUT SHEET
" " 25	SUMMARY OF QUANTITIES (R1) SHEET 25 (R2) SHEET 25 (R3) SHEET 25
" " 2K	SUMMARY OF SOIL & MATERIALS SURVEY INFORMATION (R1) SHEET 2K
" " 2A1-2A2	PHOTO MAPS
" " 2H1-2H2	HORIZONTAL ALIGNMENT & ORIENTATION (R1) SHEET 2H1, DATED SHEET; SHEET 2H1A
" " 2N	GENERAL INFORMATION (R1) SHEET 2N (R2) SHEET 2N (R3) SHEET 2N Added Sheet
" " 3 - 18	PLAN & PROFILE SHEETS (R1) SHEET 3 (R3) SHEET 5
" " 19 - 29	GEOMETRICS & GRADES (R1) SHEETS 19, 27, 28, 129 (R2) SHEET 27, ADDED SHEET 27A
" " 30 - 38	DRAINAGE CONSTRUCTION & REMOVALS (R1) SHEETS 30, 37, 38 (R2) SHEET 30
" " 39 - 45	DESIGN DATA SHEETS
" " 46 - 56	DRAINAGE STRUCTURE CROSS SECTIONS
" " 57 - 60	SPECIAL PLAN 1C MECHANICALLY STABILIZED EARTH WALL 12'X10' SINGLE SPAN RC BOX CULVERT
" " 61	SPECIAL PLAN 2C ELECTRICAL CONDUIT SYSTEM FOR CONCRETE BOX CULVERT PEDESTRIAN UNDERPASS LIGHTS
" " 62	SPECIAL PLAN 3C FABRIC SILT FENCE DETAILS
" " 63 - 64	SPECIAL PLAN 4C AREA INLET & GRATE DETAILS
" " R1 - R14	RIGHT-OF-WAY SHEETS
" " X1 - X82	CROSS SECTIONS

STATE OF NEBRASKA
DEPARTMENT OF ROADS

PLANS FOR CONSTRUCTION
VAN DORN STREET -
LINCOLN
LANCASTER COUNTY

PROJECT NO.	SHEET NO.
F-RS-2-6(112)	1
CONTROL NO.	11365
CONTROL NO.	
CONTROL NO.	

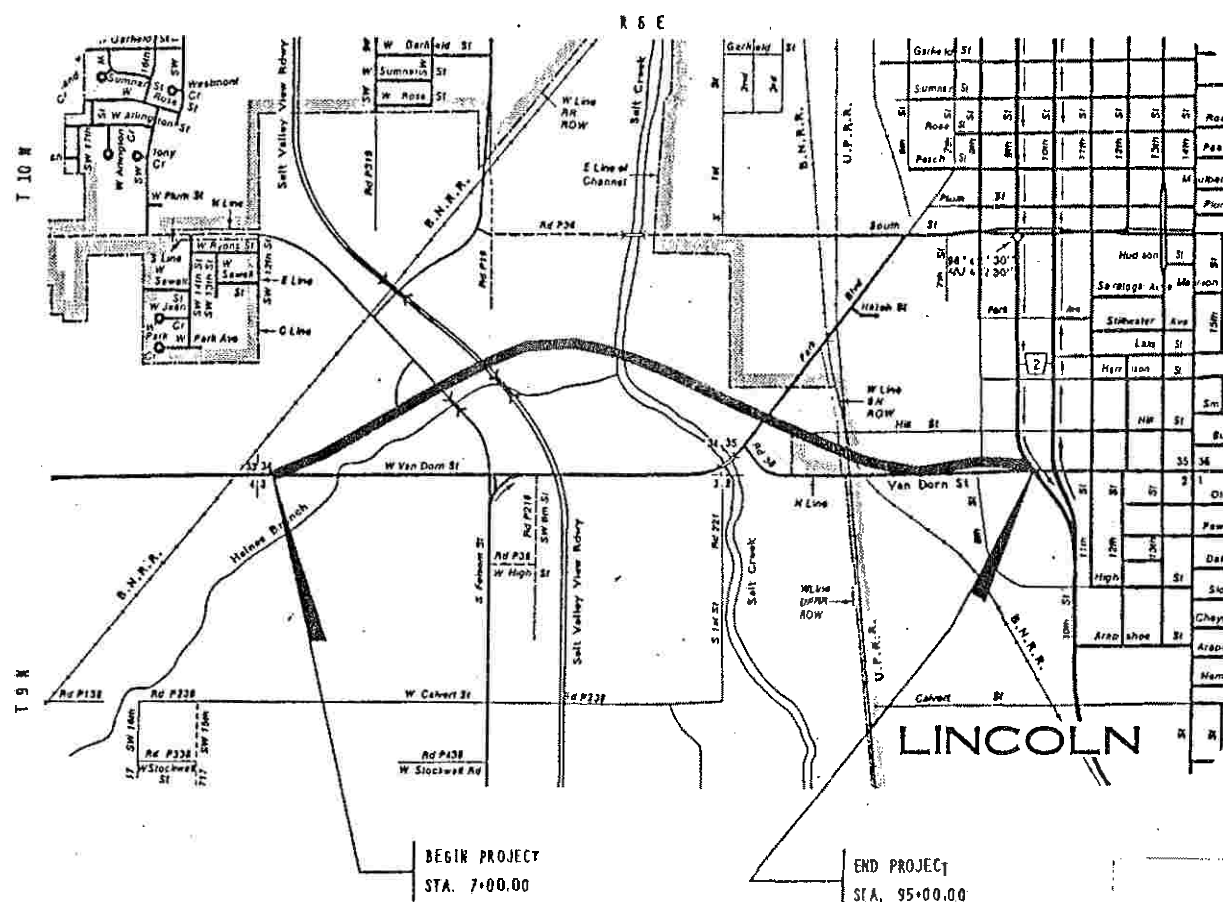
(R1) 15 May 92
(R2) 11 AUG 92
(R3) 2 NOV. 92

THE NEBRASKA 1985 STANDARD SPECIFICATIONS FOR HIGHWAY CONSTRUCTION, AS APPROVED BY THE FEDERAL HIGHWAY ADMINISTRATION, AND THE SPECIAL PROVISIONS APPLY TO THIS PROJECT.

THE WORK ON THIS PROJECT CONSISTS OF GROUPS	
1-GRAVING, 3-CONCRETE PAVEMENT, & 4-CULVERTS	
GROUPS 1, 3, & 4 ARE INCLUDED IN THE LETTING OF MARCH 19, 1992	
GROUPS ARE INCLUDED IN THE LETTING OF	
GROUPS ARE INCLUDED IN THE LETTING OF	

DESIGN DESIGNATION	
NEW OR RECONSTRUCTION	
RURAL	
TRAFFIC	
YEAR: 1991	2012
ADT: 4,770	15,800
DIV: 480	1,580
T = 5 %	D = 5 %
DESIGN NO. DR-2	
N. F. C. ARTERIAL	
TERRAIN ROLLING	

WORK ON THIS PROJECT IS AUTHORIZED PURSUANT TO THE CONDITIONS STIPULATED IN THE ARMY CORP OF ENGINEERS NATIONWIDE PERMIT NO. NE-25B-OXT-2-91-76280 (NE-91-881)



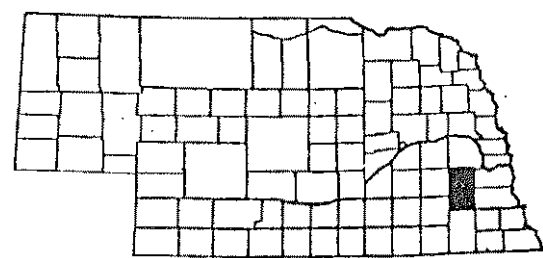
STD. PLAN NO.	DESCRIPTION
301-R4	(2 SHEETS) PAVEMENT DETAILS
303-R1	CURB RAMPS
328-R2	(2 SHEETS) 6 TO 10 INCH CONCRETE PAVEMENT
331-R2	(2 SHEETS) 6 TO 10 INCH CONCRETE PAVEMENT WITH CURB
410-R2	(2 SHEETS) FLARED END SECTIONS FOR CULVERT PIPES
425-R2	COLLARS AND ELBOWS FOR CONCRETE PIPES
435	(3 SHEETS) MANHOLE
443-R5	(2 SHEETS) CURB INLETS AND JUNCTION BOX
501-R1	EROSION CONTROL
804	PRECAST CONCRETE R.O.W. MARKER
920-R3	TRAFFIC CONTROL
921-R3	TRAFFIC CONTROL
922-R3	TRAFFIC CONTROL DEVICES
932	URBAN TRAFFIC CONTROL
1110	(2 SHEETS) REINFORCED CONCRETE BOX CULVERTS SINGLE SPAN WITH 10 & 12-FOOT RISE

NOTICE
HALF SIZE PLANS
Scale Reduced approximately 50%

APPROVED JANUARY 22 19 92



Wayne K. Kline
DEPUTY DIRECTOR-ENGINEERING



U. S. DEPARTMENT OF TRANSPORTATION
FEDERAL HIGHWAY ADMINISTRATION
APPROVED
For DIVISION ADMINISTRATOR DATE

CONVENTIONAL SIGNS

FENCE LINE	— — — — —
GUARD RAIL	— — — — —
TRAVELED WAY	— — — — —
DIKE	XXXXXXXXXXXX
CULVERTS	— — — — —
RAILROAD RIGHT OF WAY	— — — — —
POWER POLE	— — — — —
TELEPHONE or TELEGRAPH POLE	— — — — —
MARSH	— — — — —
HEDGE	— — — — —
TREES	— — — — —

ROW LEGEND

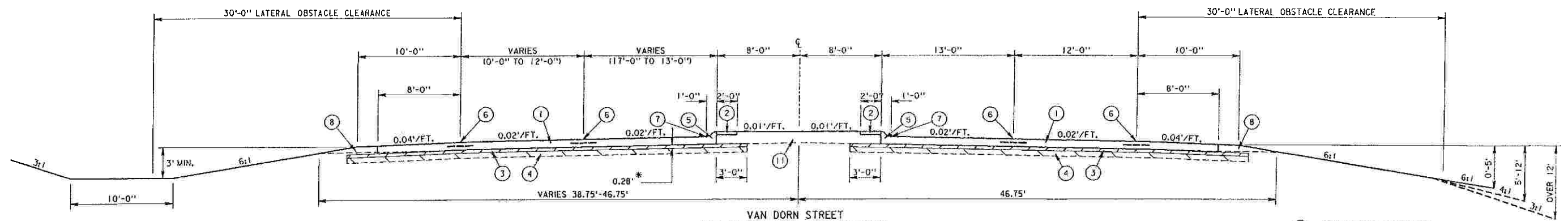
LIMITS OF CONSTRUCTION	— — — — —
PREVIOUS R.O.W.	— — — — —
NEW R.O.W.	— — — — —
PERMANENT CHANNEL EASEMENT	— — — — —
PERMANENT FILL ENCROACHMENT	— — — — —
TEMPORARY EASEMENT	— — — — —
EXCESS TAXING	— — — — —
PERMANENT EASEMENT EXCEPT CHANNEL	— — — — —
EXISTING RAILROAD EASEMENT	— — — — —
NEW RAILROAD PERMANENT EASEMENT	— — — — —
NEW RAILROAD TEMPORARY EASEMENT	— — — — —



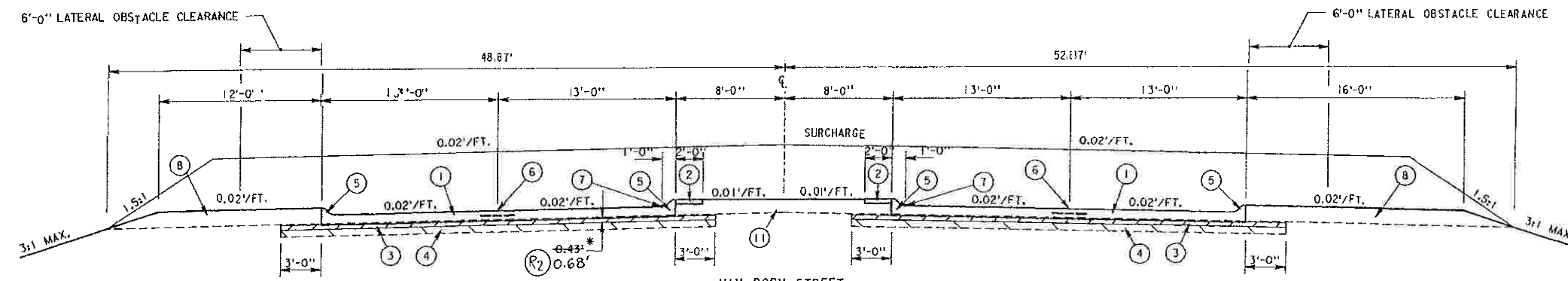
REFERENCE POST NO.	TO REFERENCE POST NO.
BRIDGE EXCEPTIONS:	FROM STA. 25+35.00 TO STA. 26+70.00
" "	" " 30+10.00 " " 32+55.00
" "	" " 44+31.00 " " 47+69.00
" "	" " 72+90.00 " " 75+35.00
TOTAL LENGTH OF EXCEPTIONS	FEET
TOTAL NET LENGTH OF PROJECT	7,837.00 FEET 1.484 MILES

TYPICAL CROSS SECTIONS

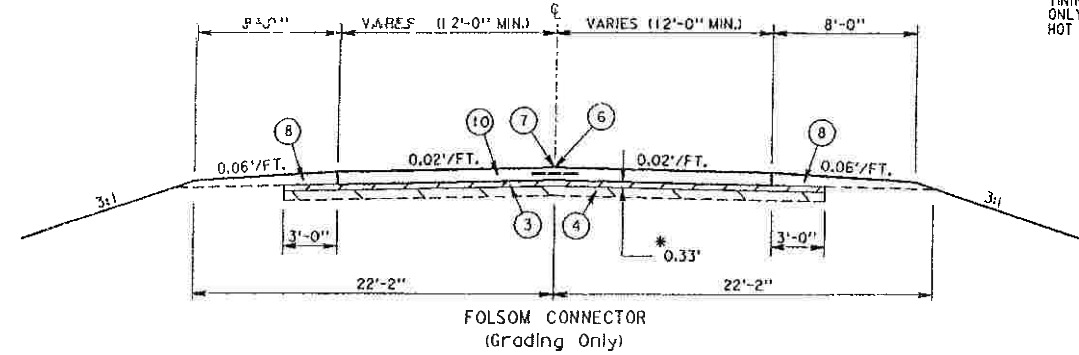
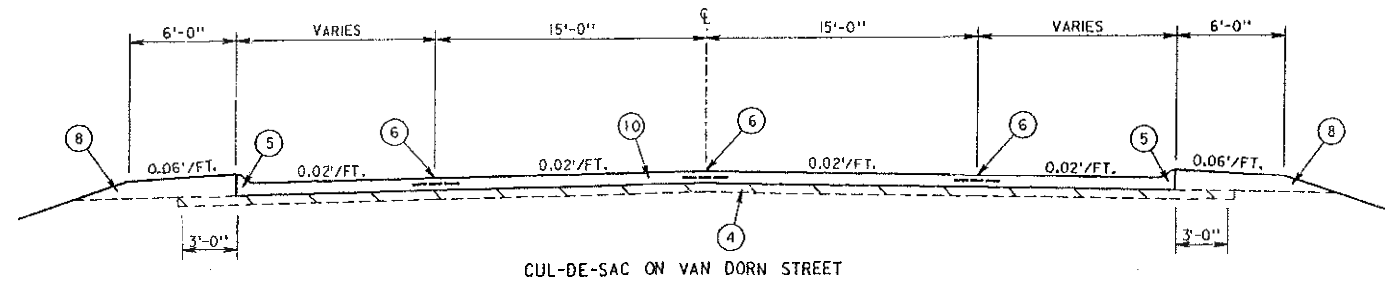
(R2) 11 AUG 92



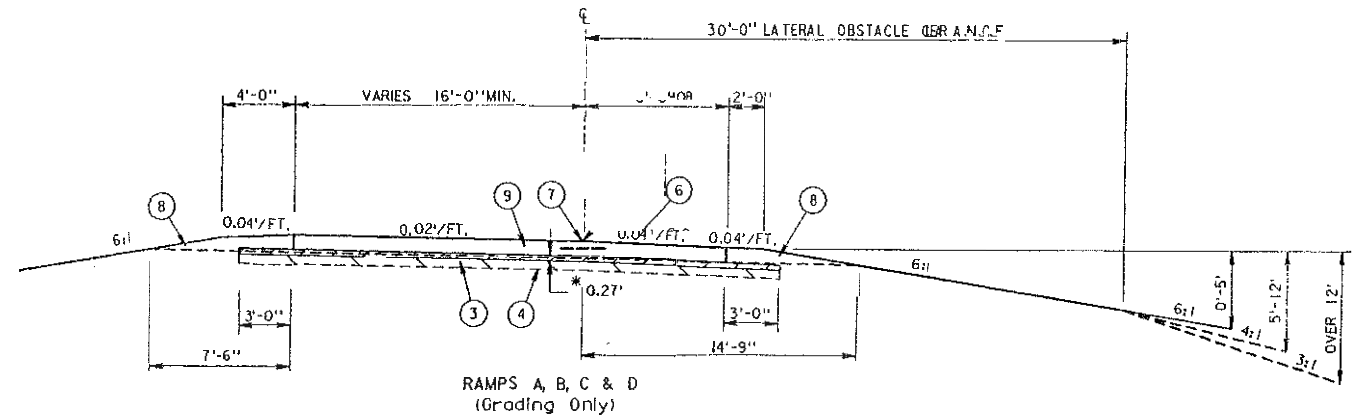
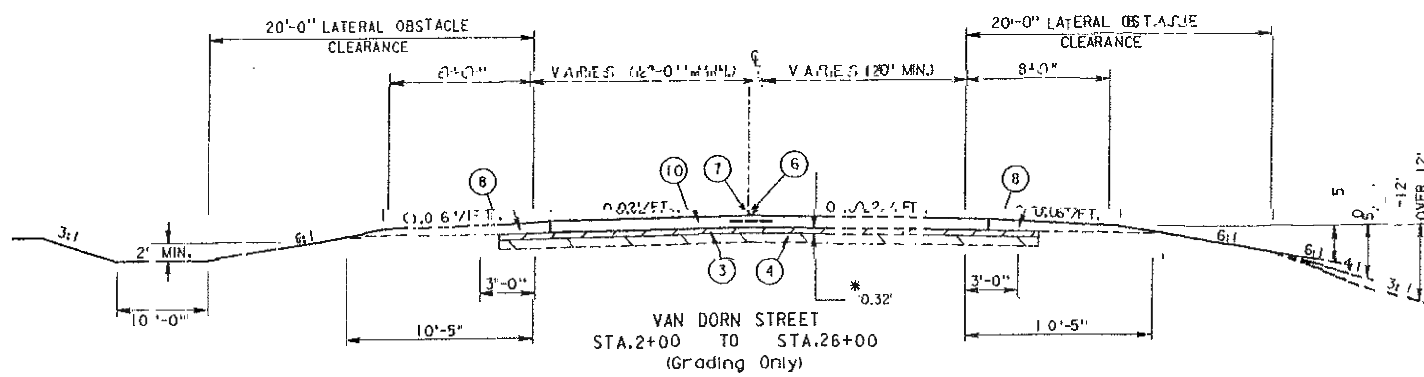
- ① 9" CONCRETE PAVEMENT
- ② CONCRETE MEDIAN SURFACING
- ③ 4" FOUNDATION COURSE (REGULAR)
- ④ SUBGRADE PREPARATION
- ⑤ INTEGRAL CURB
- ⑥ LONGITUDINAL JOINT
- ⑦ PROFILE GRADE
- ⑧ SHOULDER CONSTRUCTION
- ⑨ 10" CONCRETE PAVEMENT
- ⑩ 8" CONCRETE PAVEMENT
- ⑪ MEDIAN CONSTRUCTION



* THIS MATERIAL TO BE REMOVED BY THE SURFACING CONTRACTOR AND INCORPORATED INTO THE SHOULDERS.

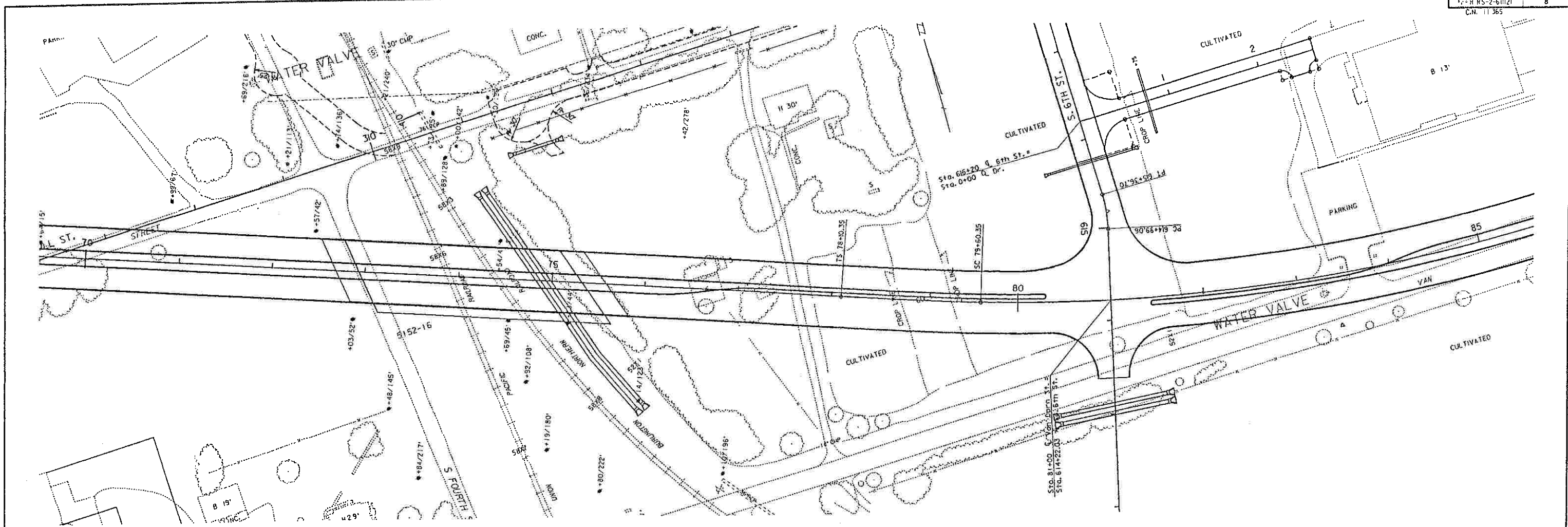


FOR DETAILS NOT SHOWN SEE STANDARD PLAN 331-R2 & 328-R2. FINISHING REQUIRED STA. 63+38.61 TO STA. 65+41 ONLY. HOT POURED JOINTS SHALL BE USED.

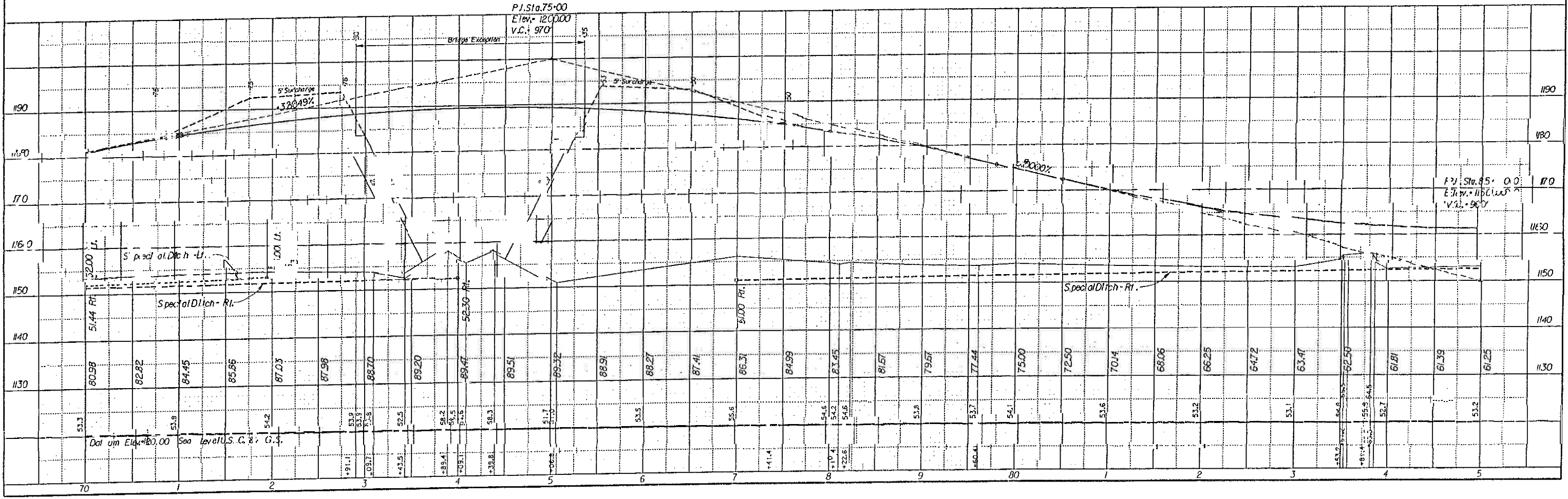


ZG:HTO:3111365.TYP

PLAN	DATE
BY	DATE
CHECKED	DATE
APPROVED	DATE
NOTE BOOK	DATE
NO.	NO.

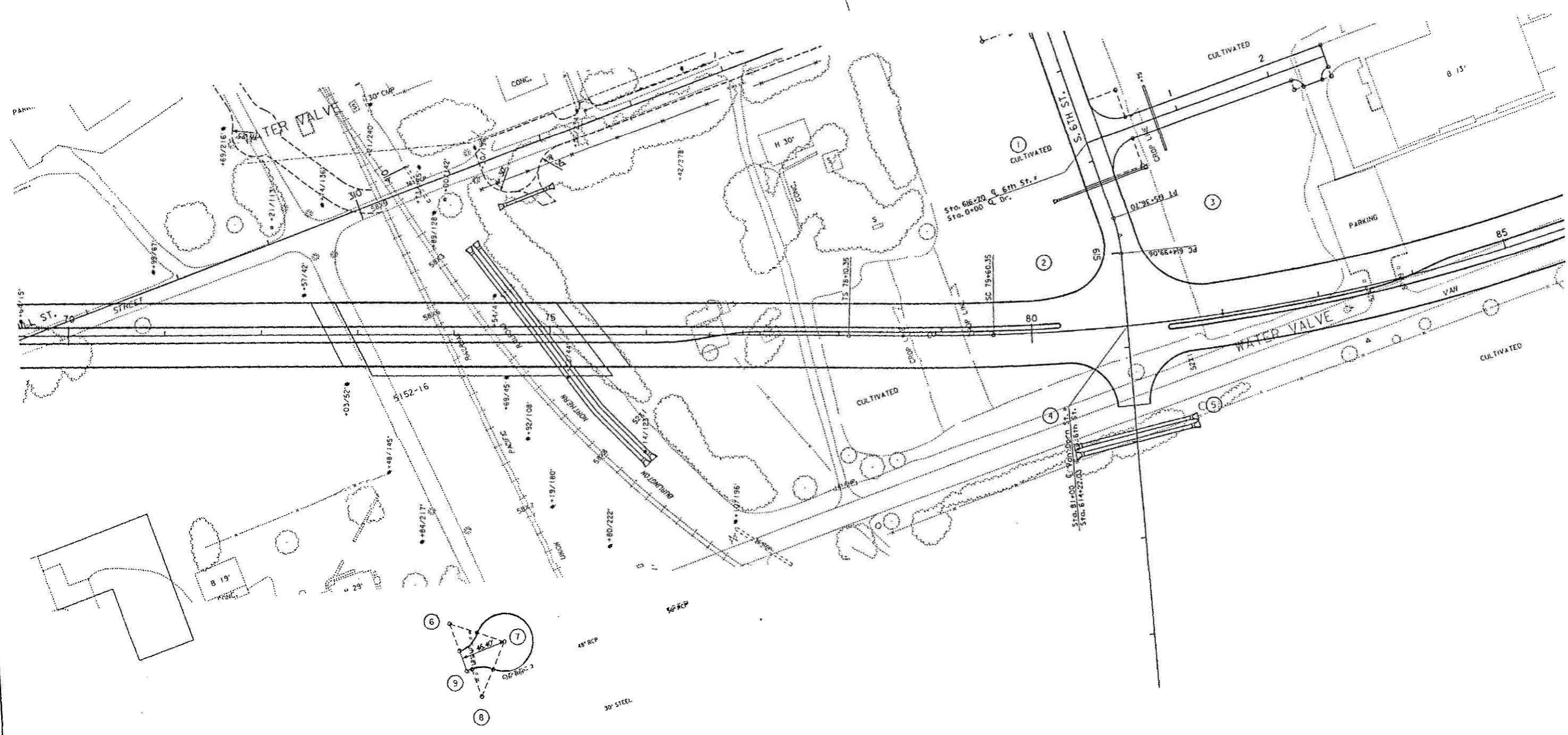


PROFILE	DATE
BY	DATE
CHECKED	DATE
APPROVED	DATE
NOTE BOOK	DATE
NO.	NO.



Z6170311365.PPI

- ① 150' R.P. 184.00' LT. STA. 80+00.00
 P.C. 34.00' LT. STA. 80+00.00
 P.T. 39.63' LT. STA. 80+42.99
- ② 50' R.P. 87.86' LT. STA. 80+29.32
 P.C. 39.63' LT. STA. 80+42.99
 P.T. 100.60' LT. STA. 80+80.18
- ③ 70' R.P. 104.00' LT. STA. 81+92.27
 P.C. 88.62' LT. STA. 81+20.35
 P.T. 34.00' LT. STA. 81+92.27
- ④ 50' R.P. 84.00' RT. STA. 80+35.81
 P.C. 34.00' RT. STA. 80+35.81
 P.T. 82.95' RT. STA. 80+83.71
- ⑤ 50' R.P. 84.00' RT. STA. 81+64.19
 P.C. 82.95' RT. STA. 81+16.29
 P.T. 34.00' RT. STA. 81+64.19
- ⑥ 30' R.P. 102.34' RT. STA. 74+92.28
- ⑦ 30' R.P. 321.07' RT. STA. 74+59.28
- ⑧ 30' R.P. 376.80' RT. STA. 74+31.06
- ⑨ POINT 350.83' RT. STA. 74+21.04



GEOMETRICS & GRADES

Z06470.311365.002

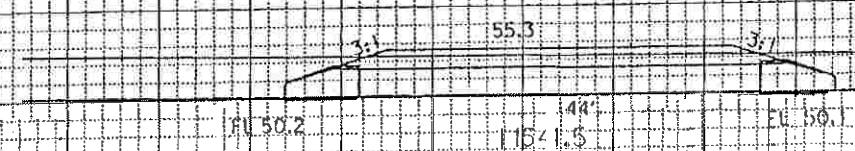
FED. ROAD DIV. NO.	STATE	FED. AID PROJ. NO.	SHEET NO.
7	NEBR.	F-RRS-2-6182	5

CN. 11365
 HORIZONTAL SCALE 1"=10'
 VERTICAL SCALE 1"=10'

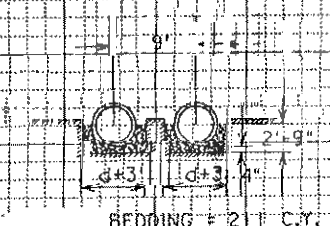
312+00

311+00

311+66
 50' R+



D.A. = 7.16 Acres
 D50 = 26 cfs
 H.W. = 4.8'
 Build 36" x 44" RCP w/RE5 on Inlet and Outlet, Plan 410-R2.
 Exc. = 0 c.y.



74+91

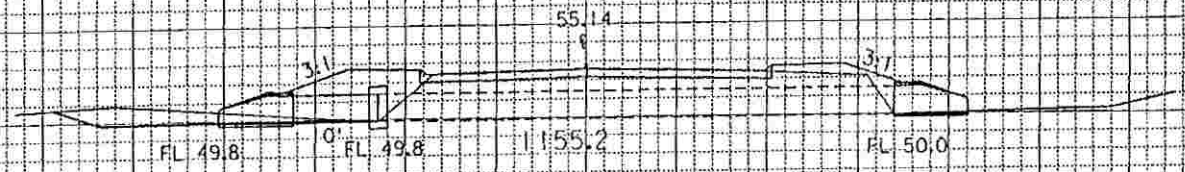
D.A. = 44.26 Acres
 D50 = 122 cfs
 H.W. = 4.0'
 Build 2'-48" x 282" Reinf. Concr. Pipes, Bedding on 38 deg 15' Skew
 8' 9" Centers w/RE5 Plan 410-R2.
 2-7' long elbows; Plan 425-R2.
 Exc. = 368 c.y.

Corp. Slope Protection

7 Deg. Horiz. Elbow



221+18



D.A. = 7.72 Acres
 D50 = 33 cfs
 H.W. = 2.9'
 36" x 57" RCP
 Extend 10' L.F. FES on Inlet and Outlet, Plan 410-R2.
 I-Collar, Plan 425-R2.
 Exc. = 1 c.y.

140 130 120 110 100 90 80 70 60 50 40 30 20 10 0 10 20 30 40 50 60 70 80 90 100 110 120 130 140

BUILD REINFORCED CONCRETE PIPE			
NO.	SIZE	DESCRIPTION	EXC. CU. YDS.
7	TWIN 48" x 282	STA. 74+91 ON 9' CENTERS ON 30' 15" SKEW W/FLARED END SECTIONS PLAN 410-R2. 2-T" ELBOWS, PLAN 425-R2. D.A. = 44.29 A.C. 0.50 = 122 cfs. I.A.M. = 4.0'	368
8	TWIN 48" x 114'	STA. 613+06 ON 9' CENTERS ON 9' SKEW W/FLARED END SECTIONS, PLAN 40-R2. D.A. = 4.82 A.C. 0.50 = 113 cfs. H.W. = 3.6'	146
9	24" x 100'	STA. 615+75 W/FLARED END SECTIONS PLAN 410-R2. D.A. = 1.81 A.C. 0.50 = 8 cfs. R.W. = 1.5'	16

REMOVE ASPHALT SURFACE			
STATION	TO STATION	SIDE	SO. YDS.
83+25	83+95	LT.	375

REMOVE DRIVEWAY			
STATION	TO STATION	SIDE	SO. YDS.
83+00		RT.	85

REMOVE PAVEMENT			
STATION	TO STATION	SIDE	SO. YDS.
74+17.083+0.57	82+00	RT.	2003

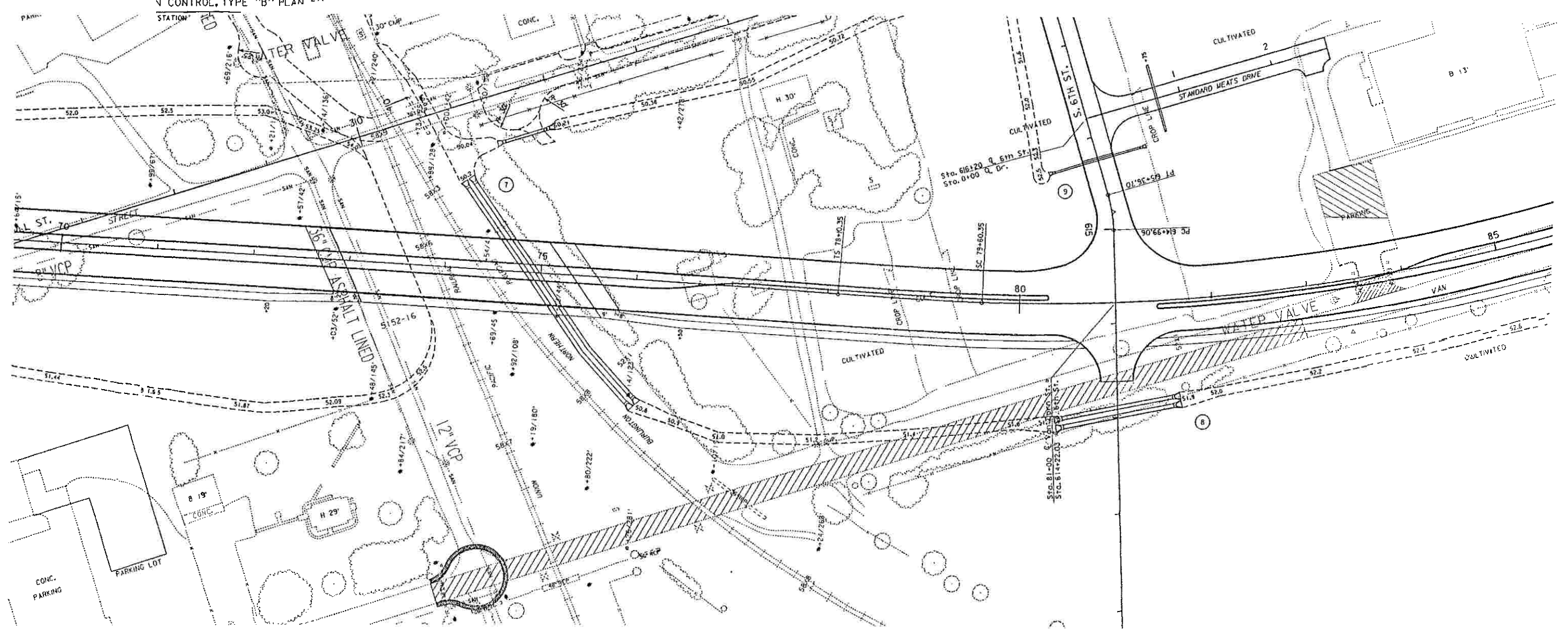
REMOVE FENCE			
STATION	TO STATION	SIDE	LI. FT.
72+55	73+35	RT.	74

LAY DRIVEWAY ALUMINUM PIPE			
N	SIDE	DESCRIPTION	STATION
61	6TH ST. RT.	24" x 12'	

BUILD 8" CONCRETE PAVEMENT			
STATION	TO STATION	SIDE	PLAN
74+17.083	82+00	RT.	21

EROSION CONTROL				
STATION	TO	SIDE	LENGTH	SO. YDS.
74+00	74+00	LT. & RT.	185'	82

DROP CURB, PLAN 301-R4		
STATION	TO STATION	SIDE
74+00	74+00	RT.



ADJUST MANHOLE TO GRADE, PLAN 435					
STATION	SIDE	DISTANCE	FRAME & FLANGE	RING	COVER TYPE
74+83	RT.	335'	--	--	--

**DRAINAGE
CONSTRUCTION & REMOVALS**

Z64703.11365002