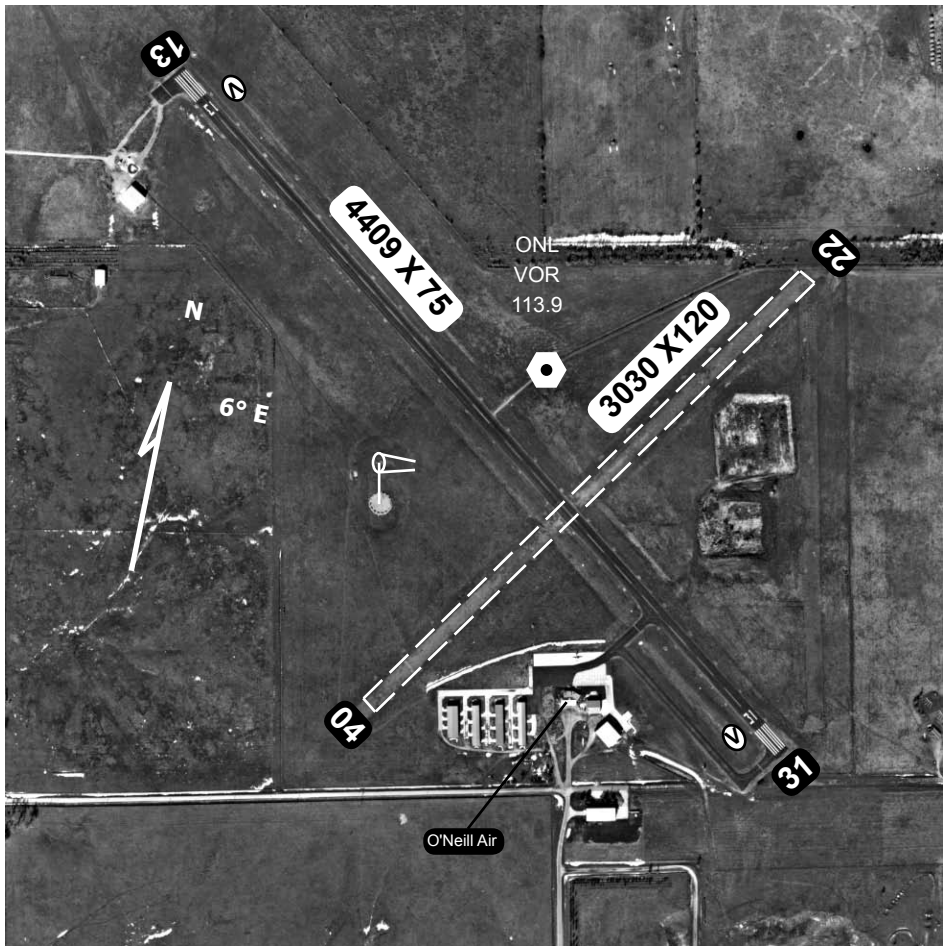


# O'Neill (ONL)

Elevation 2031'

AWOS III P/T	Minneapolis Center	CTAF
121.125 (402-336-4834)	128.0	122.8 <b>L</b>



Runway	Surface	Traffic Pattern	Runway Lights
13 / 31	Asphalt	1000-LH / 1000-LH	MIRL <b>L</b> 122.8
04 / 22	Turf	1000-LH / 1000-LH	None
<b>Airport Manager</b>	Brian Williams		402-336-3377
<b>FBO</b>	O'Neill Air L.L.C.		402-336-3377
<b>Fuel</b>	100 LL & Jet A	<b>Hours</b>	0700 - 1900

O'Neill Municipal  
John L. Baker Field

N 42 °28.19' W 98 ° 41.28'