

# WELCOME!

---

## **N-370/150th St**

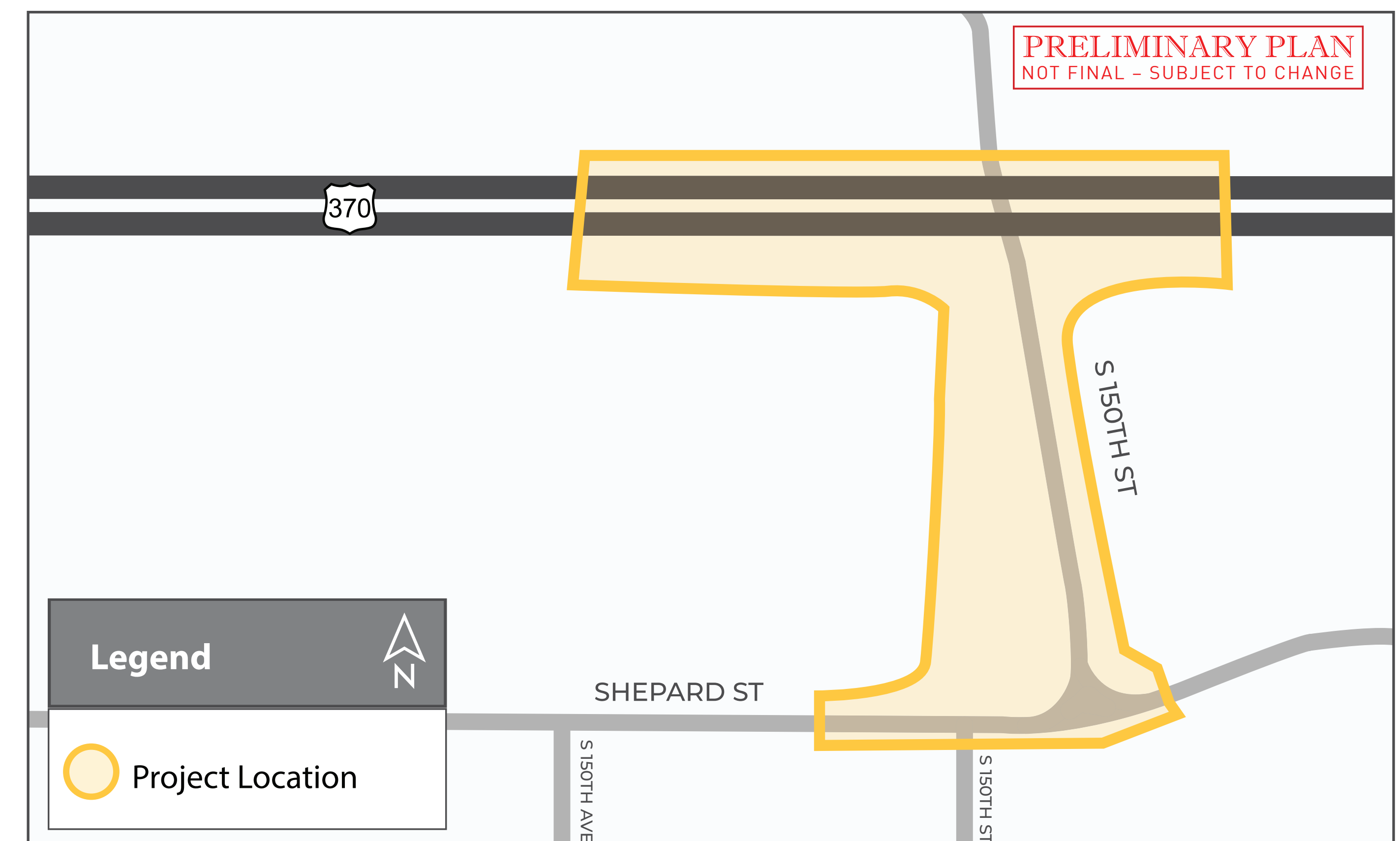
# **Pre-Construction Public Information Meeting**

**PLEASE SIGN IN**

# Project Location & Improvements

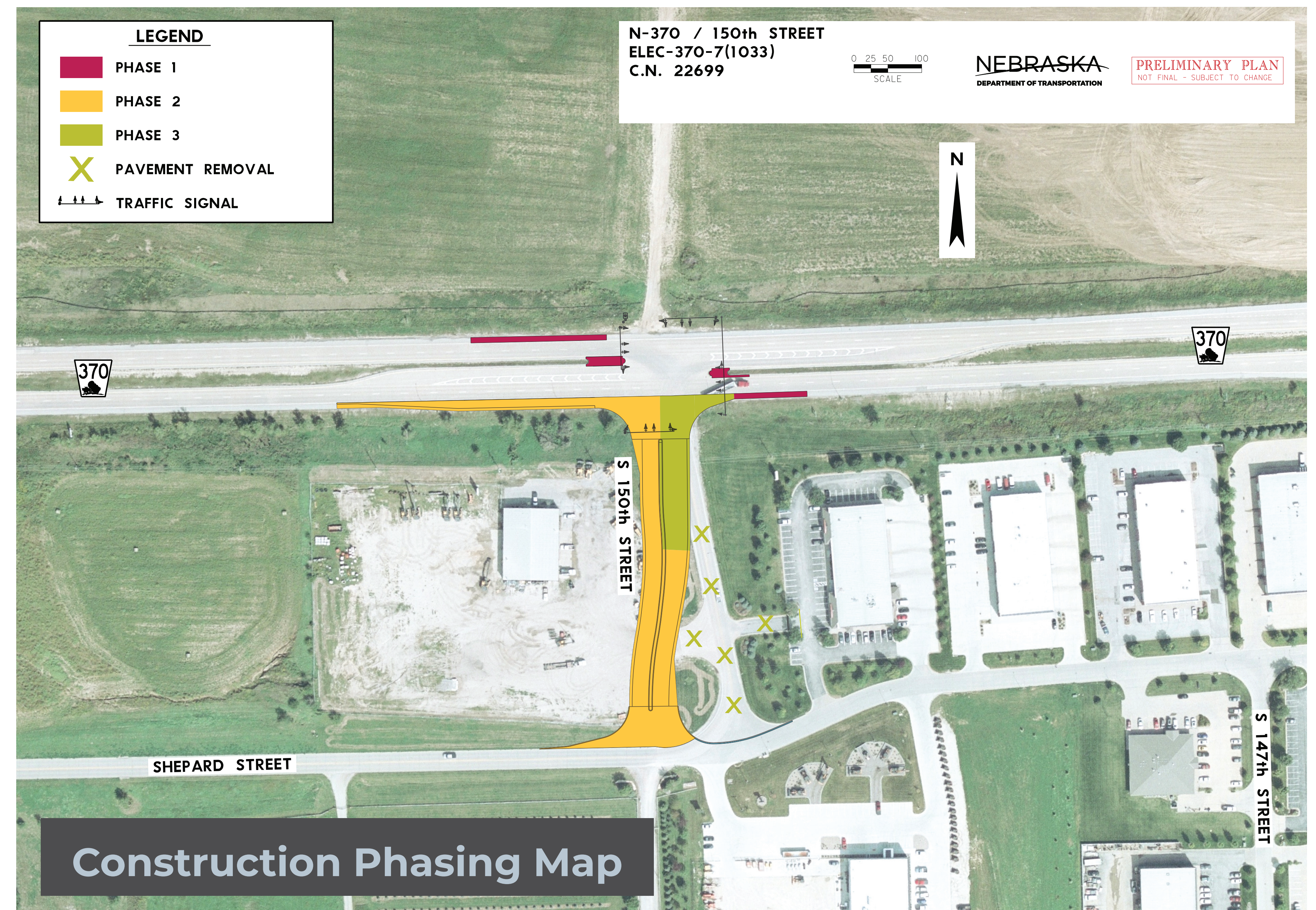
Improvements on this project include:

- Widening of the existing surface to add an eastbound right turn lane and a new eastbound traffic signal at the N-370 and 150th Street intersection.
- Reconstruction of 150th Street between N-370 and Shepard Street (south of N-370) onto a new alignment to shift towards the west and tie into a future 150th Street south of Shepard Street.



# Traffic Impacts

Highway traffic will be maintained through the project. Access to adjacent properties will be maintained during construction but may be limited at times due to phasing requirements.



NEBRASKA

Good Life. Great Journey.

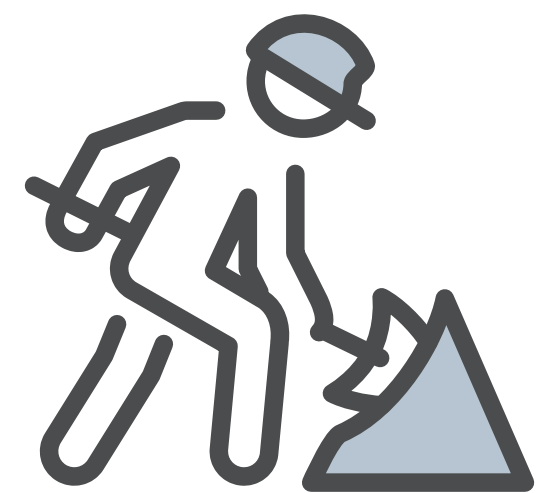
DEPARTMENT OF TRANSPORTATION

N-370/150TH ST

ELEC-370-7(1033); C.N. 22699

# Project Scope

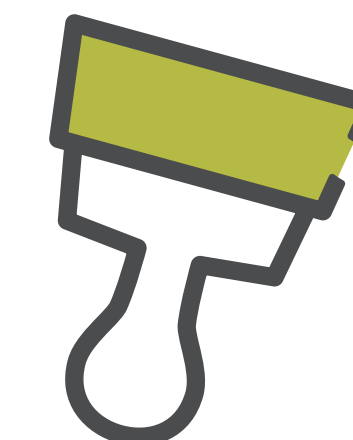
Work includes:



paving



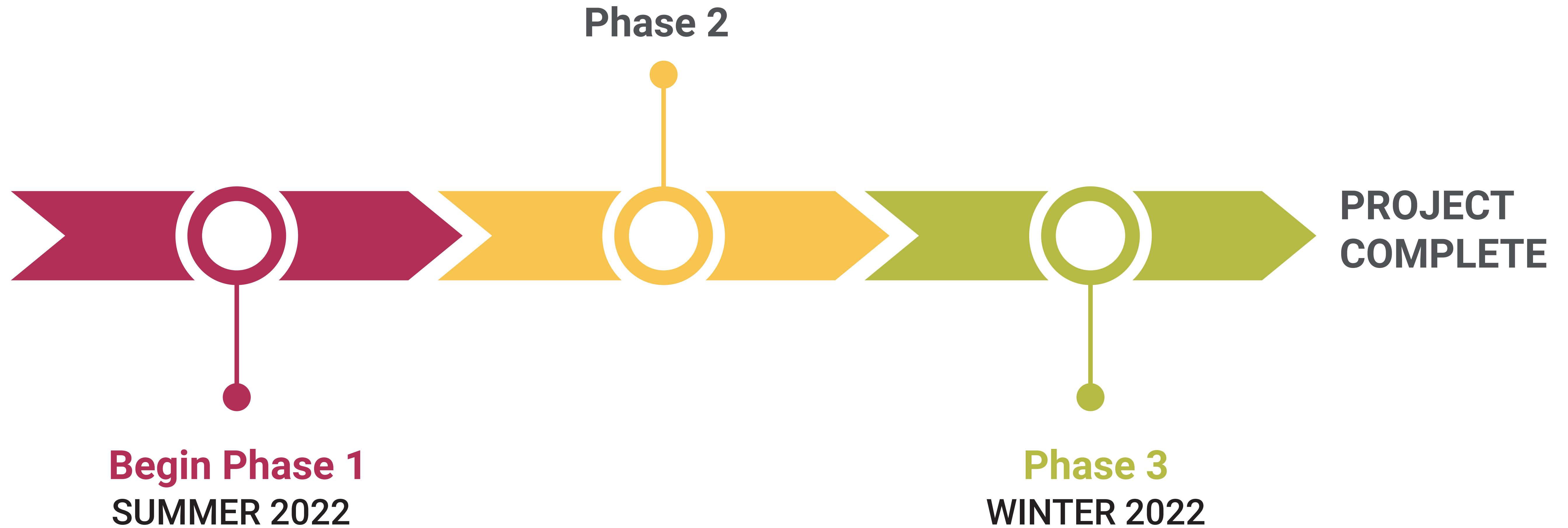
earthwork



new permanent  
pavement  
markings

Any existing street lighting would be modified as necessary.

# Schedule & Cost



**\$** APPROXIMATE COST  
**\$1.4M**