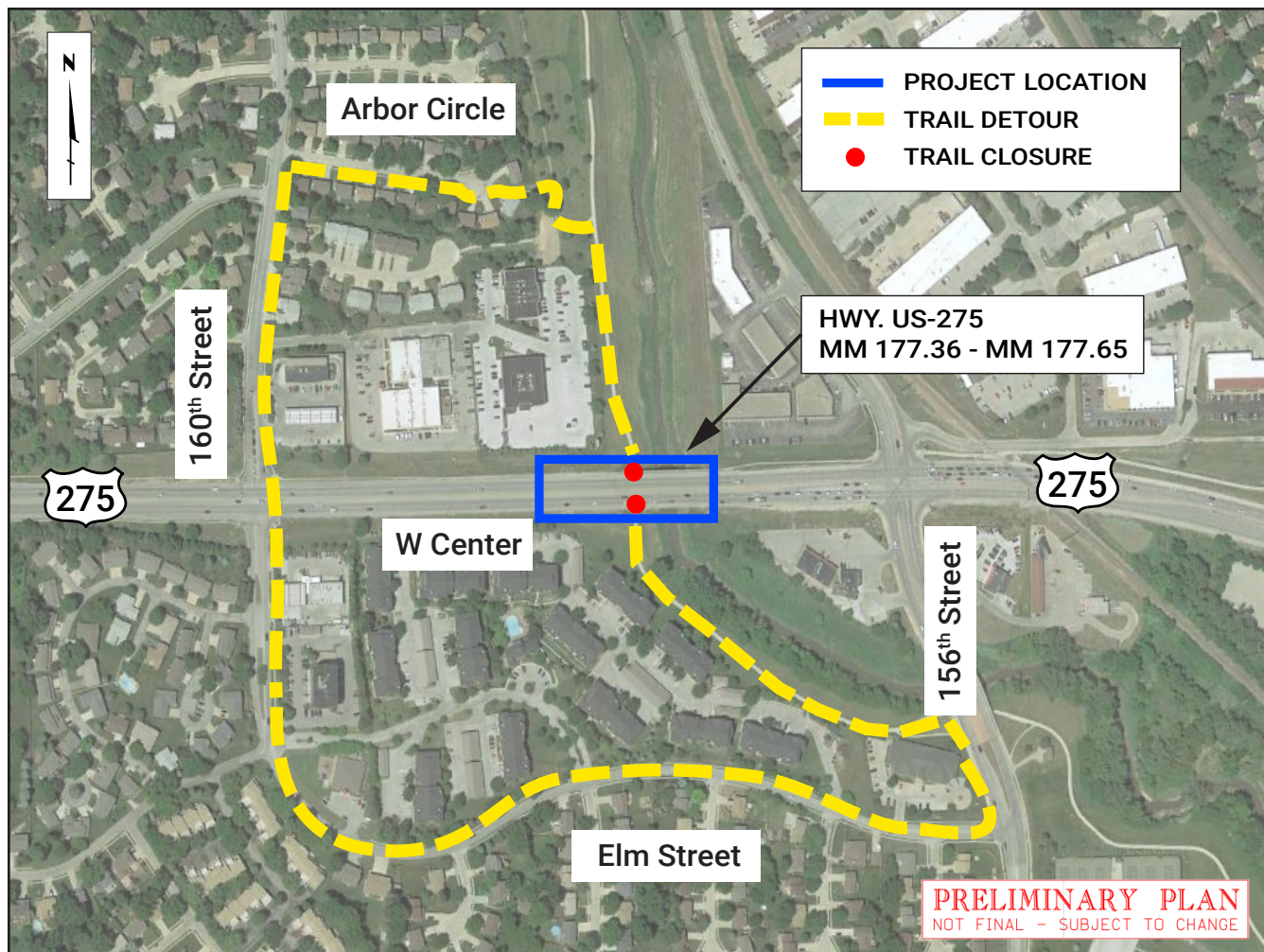


W Br Papillion Creek Bridge, Omaha

NH-275-7(203); C.N. 22578A



Send comments or questions to:

Sarah Soula, NDOT Public Involvement | sarah.soula@nebraska.gov | 402-479-4871
1500 Highway 2, PO Box 94759, Lincoln, NE 68509-4759

For more information:

Tim Weander, NDOT District 2 Engineer | tim.weander@nebraska.gov | 402-935-5410
PO Box 45461, Omaha, NE 68145-0461

dot.nebraska.gov/projects/future-projects/