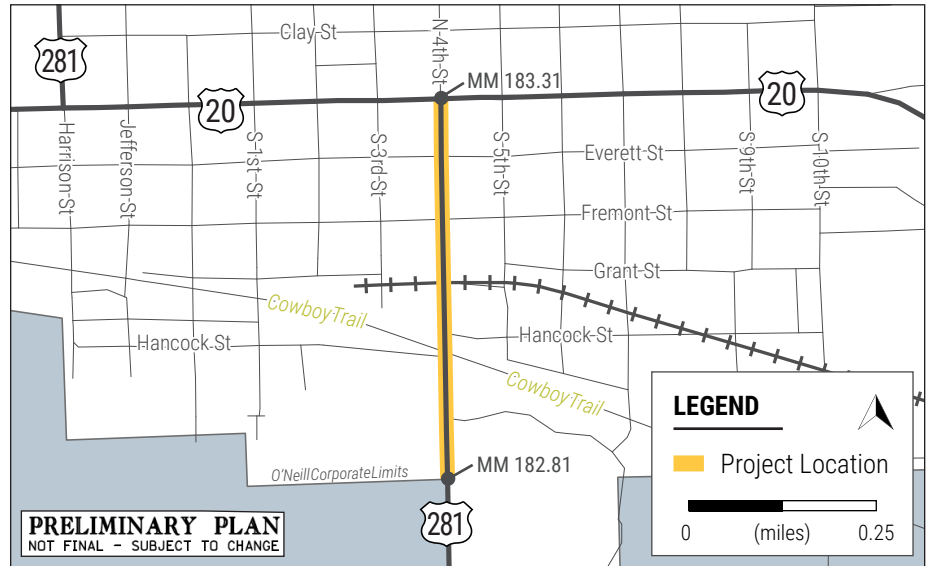


# E JCT US-20 SOUTH IN O'NEILL

NH-281-4(124); C.N. 80864 // O'Neill, NE



Top: Deteriorating concrete conditions can be seen throughout the project area.

Bottom: The project would also include replacement of the railroad crossing signals.

## OPEN HOUSE PUBLIC MEETING

Thursday, December 5, 2019  
4:30 to 6:30 p.m. CST

O'Neill Public Library  
601 E Douglas St.  
O'Neill, NE 68763

## PROJECT LOCATION

The proposed project would involve reconstructing approximately 0.50 miles of US Highway 281 (US-281) in the City of O'Neill, Holt County. The project would start at approximately mile marker (MM) 182.81, 0.35 miles north of the bridge over the Elkhorn river, and extend north to MM 183.31, the junction of US-281 with US Highway 20 (US-20) and US Highway 275 (US-275).

## PURPOSE AND NEED

The purpose of the proposed project is to preserve the transportation asset of US-281, improve the reliability of the transportation system, and ensure the mobility of the traveling public. The need for the proposed project is based on existing roadway conditions.

## SCOPE OF WORK

Proposed improvements would include reconstructing the concrete pavement, shoulders, curb, and gutter. The project would also construct new sidewalk and curb ramps, as well as remove and replace existing street lighting, traffic signals, and the railroad crossing signals at MM 183.05. Additional work would include storm sewer improvements.

## TRAFFIC COUNTS

Traffic Count	2015	2040
Vehicles Per Day (ADT)	3,150	5,257
% Heavy Trucks	8%	8%



For more information, contact:

Sarah Soula, NDOT Public Involvement // sarah.soula@nebraska.gov // 402-479-4871  
Mark Kovar, NDOT District 8 Engineer // mark.kovar@nebraska.gov // 402-387-2471

### CONSTRUCTION SCHEDULE

Construction is tentatively scheduled to begin as early as spring 2021 and completed by fall 2021.

### ACCOMMODATION OF TRAFFIC

The improvements on US-281 would be constructed under traffic with lane closures controlled by appropriate traffic control devices and practices. Access to adjacent properties would be maintained during construction but may be limited at times due to phasing requirements.

### RIGHT-OF-WAY

This project would require the acquisition of additional property rights, which could include new right-of-way (ROW), control of access (CA), permanent easements (PE), and/or temporary easements (TE) for the construction of curb ramps. If your property is impacted by this project, you will be contacted by

a representative once the design footprint has been established.

### POTENTIAL IMPACTS

Minimal wetland impacts are anticipated; no mitigation is anticipated. The Cowboy Trail and Carney Park are located within the project vicinity; right-of-way acquisitions may be needed from these properties and impacts are likely.

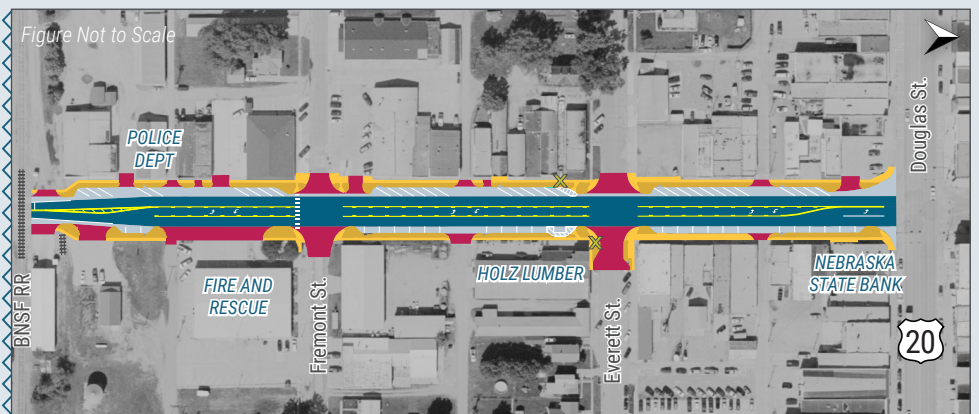
Impacts to historic properties are being considered, and comments related to historic properties would be taken at the open house public meeting.

### ESTIMATED COST

The cost of the proposed project is approximately \$4.5 million and would derive from federal and state funding sources.

## ANTICIPATED CHANGES TO PROJECT AREA DRIVEWAYS AND ON-STREET PARKING

The proposed project would remove four existing driveways and remove 16 of the existing 63 on-street parking stalls located along the project corridor. Most of the lost parking would be on the west side of US-281 as a result of geometric changes at driveways and intersections.



#### LEGEND

- Street Pavement
- Shoulder/On-Street Parking
- Sidewalk
- Imprinted Concrete
- Driveways
- Driveways to be Removed

**PRELIMINARY PLAN**  
NOT FINAL - SUBJECT TO CHANGE

Information about the proposed project will be made available on the NDOT website at <https://dot.nebraska.gov/projects/future-projects> by clicking on the "E Jct US-20 South In O'Neill" link.

