

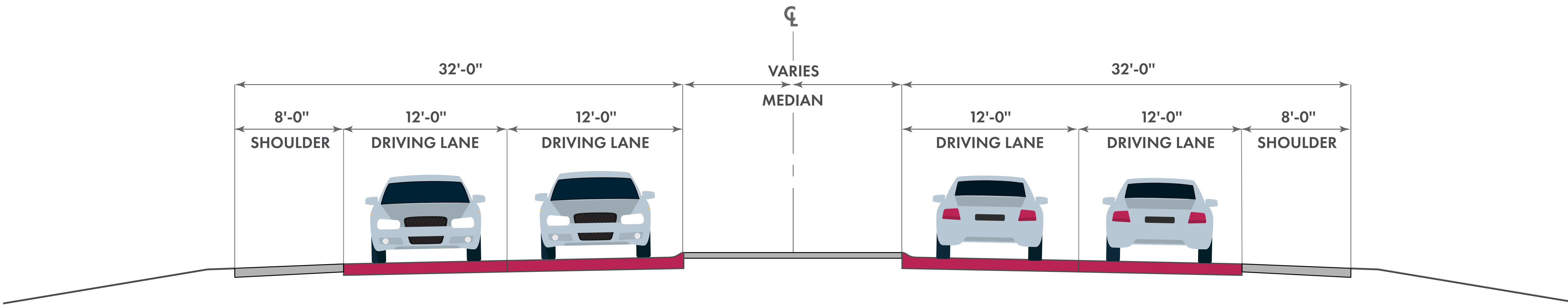
PUBLIC INFORMATION OPEN HOUSE

Project Purpose & Need

The purpose of this project is to **preserve the transportation asset, improve the reliability of the transportation system and perpetuate the mobility of the traveling public.** The need for this project is based on the existing condition of the pavement.



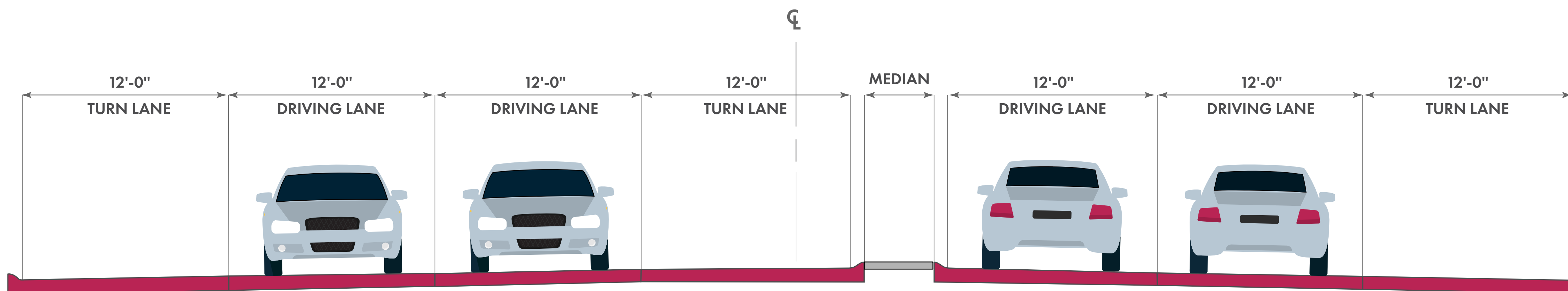
Typical Sections



**HWY N-50 (144th ST.)
N-370 TO CORNHUSKER RD.**

Improvements occurring in this section include: shoulder replacement, pavement repairs, seal cracks & joints and apply penetrating sealer

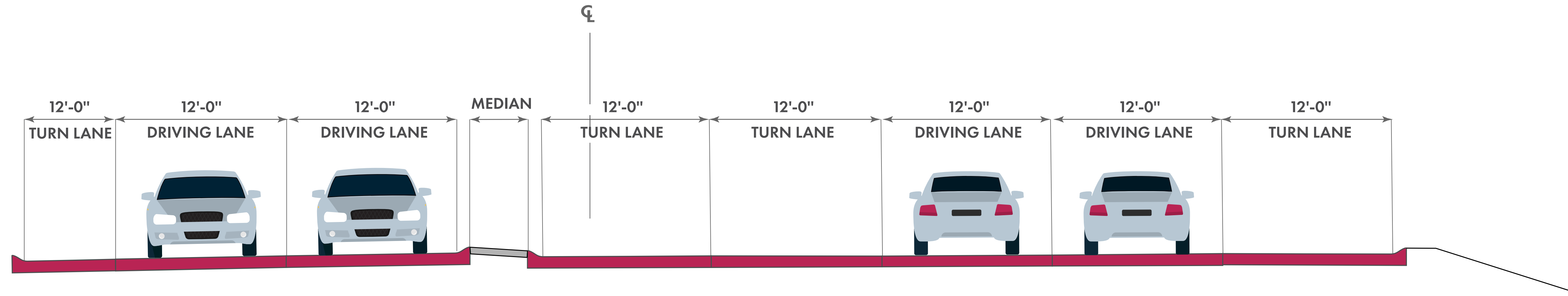
NOTE: The turn lanes depicted in the typicals would only be present at the intersections.



**HWY N-50 (144th ST.)
CORNHUSKER RD. TO ECHO HILLS DR.**

Improvements occurring in this section include: inlet repairs, pavement milling, & asphalt overlay

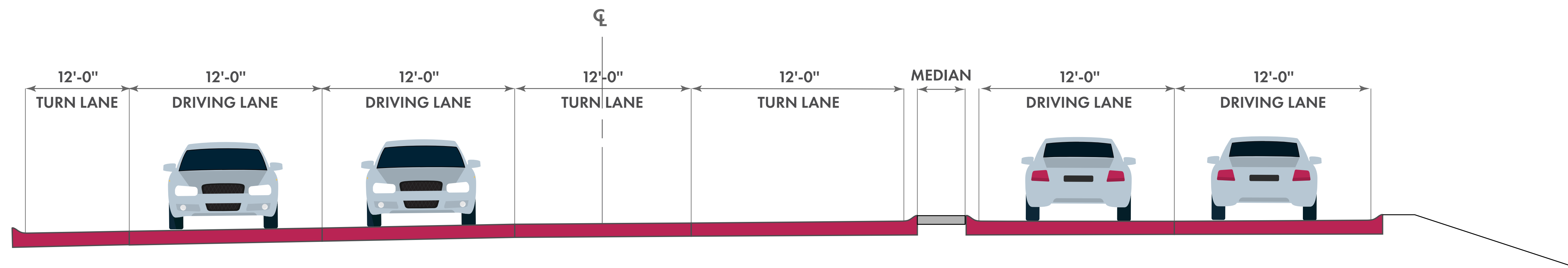
Typical Sections



**HWY N-50 (144th St.)
ECHO HILLS DR. TO HARRISON ST.**

Improvements occurring in this section include: inlet repairs, pavement milling, & asphalt overlay

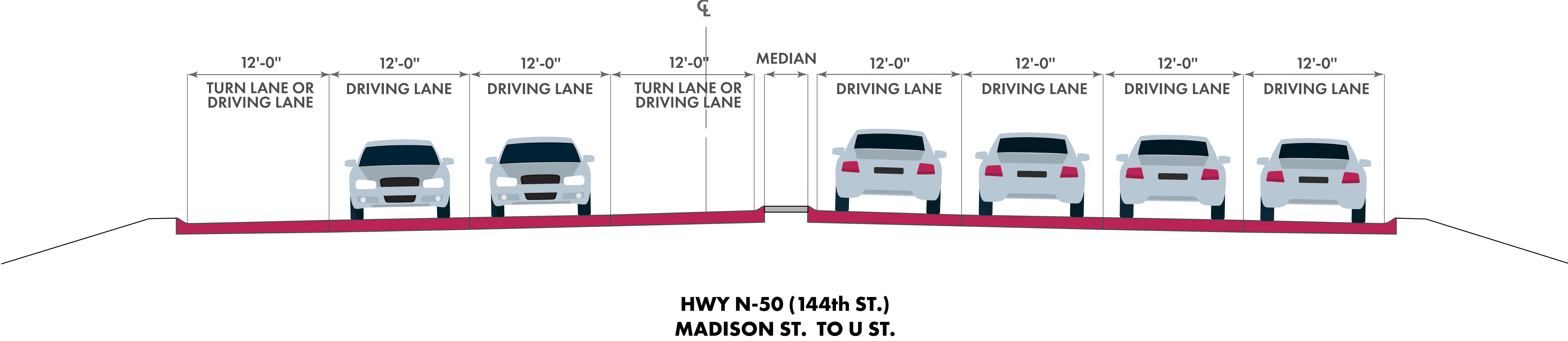
NOTE: The turn lanes depicted in the typicals would only be present at the intersections.



**HWY N-50 (144th St.)
HARRISON ST. TO MADISON ST.**

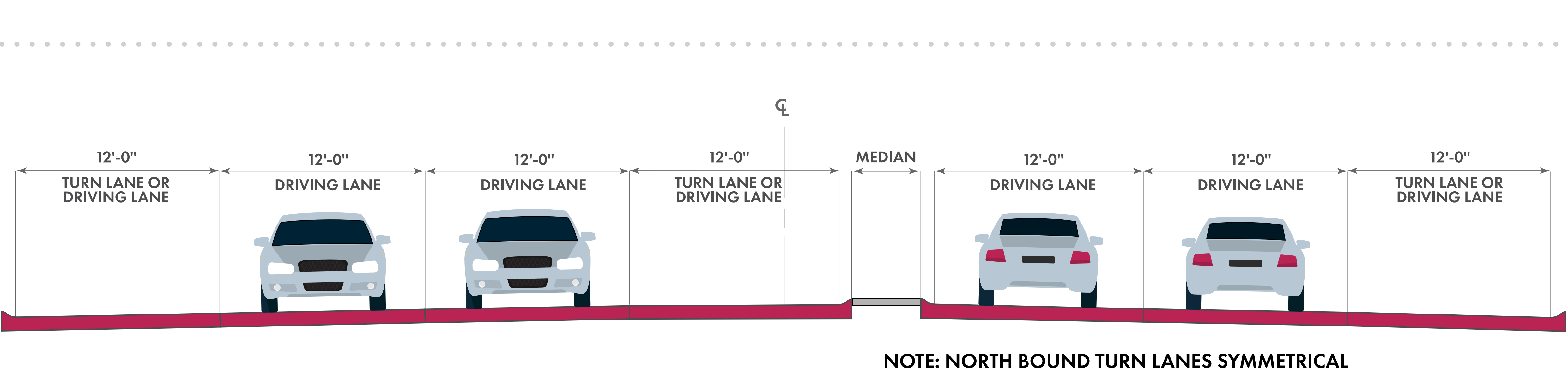
Improvements occurring in this section include: inlet repairs, pavement milling, & asphalt overlay

Typical Sections



Improvements occurring in this section include: pavement replacement & inlet repairs

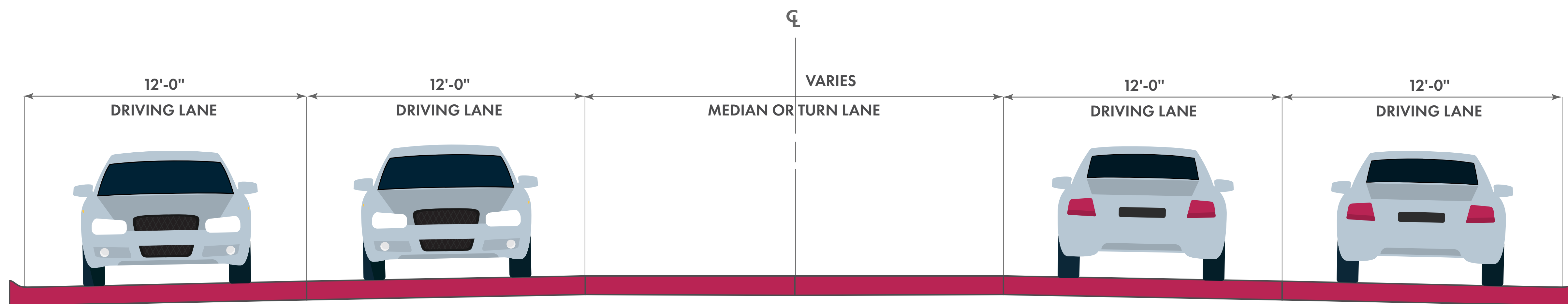
NOTE: There are two lanes going southbound and four lanes going northbound until the Stony Brook Boulevard intersection, then the roadway transitions to two lane traffic in each direction.



NOTE: The turn lanes depicted in the typicals would only be present at the intersections.

Improvements occurring in this section include: inlet repairs, pavement milling, & asphalt overlay

Typical Sections

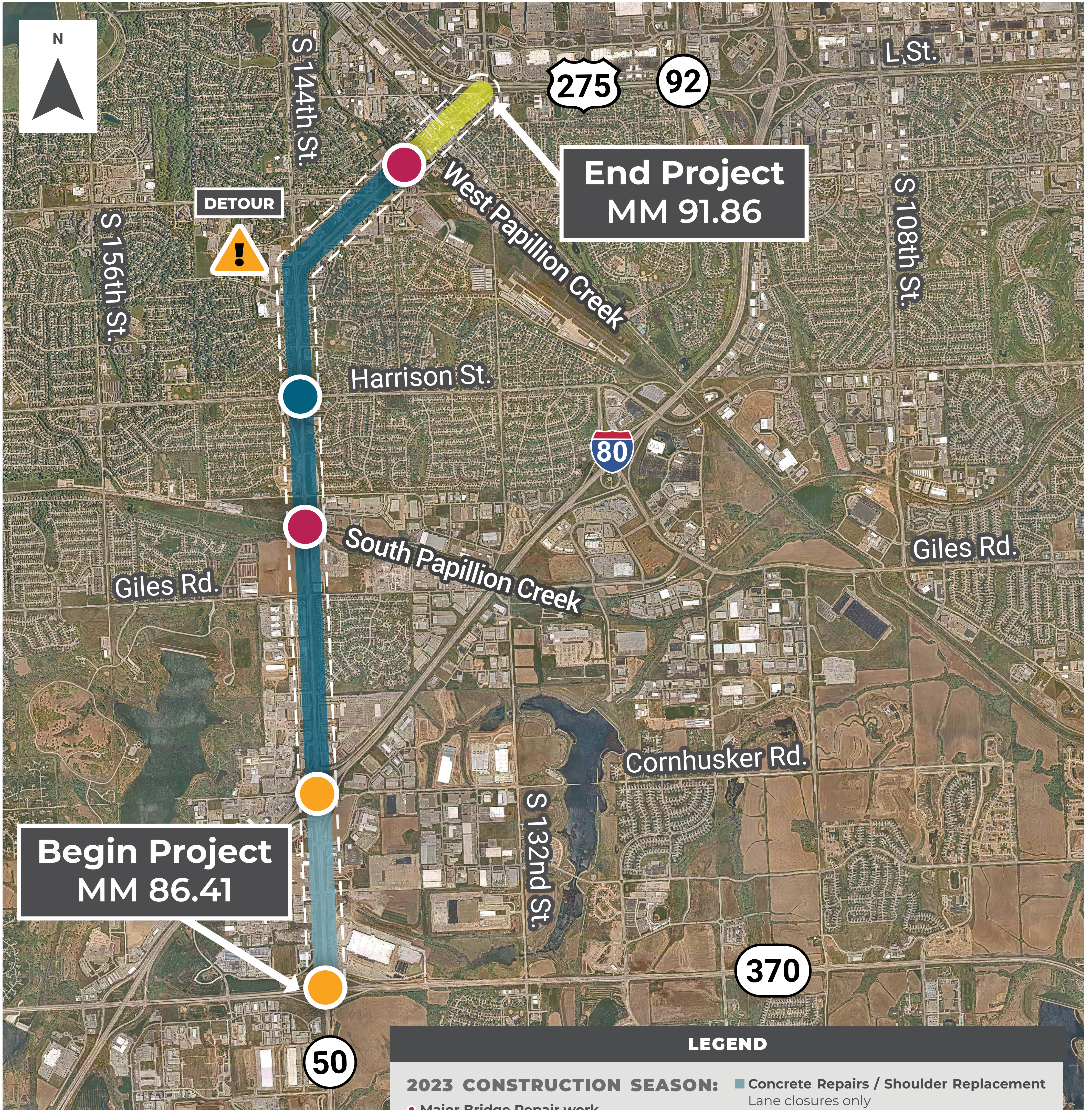


**HWY N-50 (MILLARD AVE.)
WEST PAPILLION CREEK BRIDGE TO L ST. (US-275/N-92)**

Improvements occurring in this section include: applying penetrating concrete sealer

NOTE: The turn lanes depicted in the typical would only be present at the intersections. Beyond the bridge, the roadway transitions into a single turn lane, with no raised median.

Project Location



Begin Project
MM 86.41

End Project
MM 91.86

LEGEND

<p>2023 CONSTRUCTION SEASON:</p> <ul style="list-style-type: none"> ● Major Bridge Repair work 2 phases with median crossover in two-way, two-lane traffic and limited to single lanes ● Minor Bridge Repair work Lane closures only ● Harrison Intersection widened to add dual left turns 3 phases with northbound N-50 & Harrison limited to single lane. Sidewalk limited to opposite side of Harrison 	<ul style="list-style-type: none"> ■ Concrete Repairs / Shoulder Replacement Lane closures only ■ Variable lane closures for concrete repairs Entire project corridor <p>2024 CONSTRUCTION SEASON:</p> <ul style="list-style-type: none"> ■ Mill 1" Concrete / Pave 3" Asphalt Includes replacing drainage inlets & curb repair ■ Concrete Pavement Sealer ▲ Detour 144th Street, Q Street, Millard Ave.
---	---

Trail & Historic Property Impacts



PRELIMINARY PLAN
NOT FINAL - SUBJECT TO CHANGE

- The 144th Street Trail, the Harrison Street Trail, and the West Papio Trail are all within the project vicinity and impacts are anticipated.
- Two historical properties are located within the project vicinity; however, no impacts are anticipated.
- No wetland or water resource impacts are anticipated.

LEGEND	
	Project Area
	144th Street Trail
	Harrison St. Trail
	West Papio Trail
	Trail Detour
	Trail Closure
	Reconstruct Curb Ramp

Project Schedule

Milestones

Public Information Meeting

March 17, 2022

Right of Way Appraisals/Acquisitions

In progress

Anticipated Construction Start

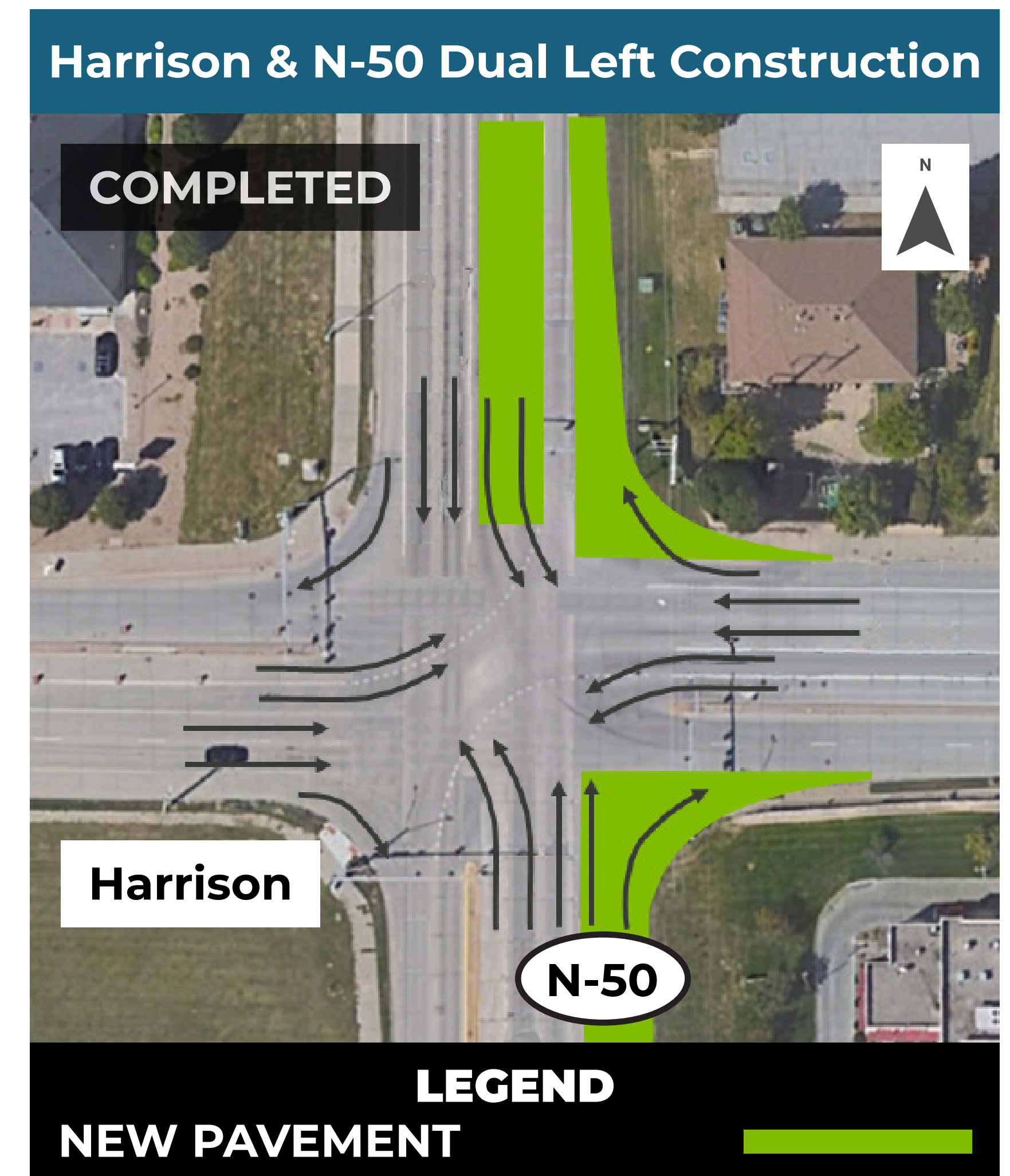
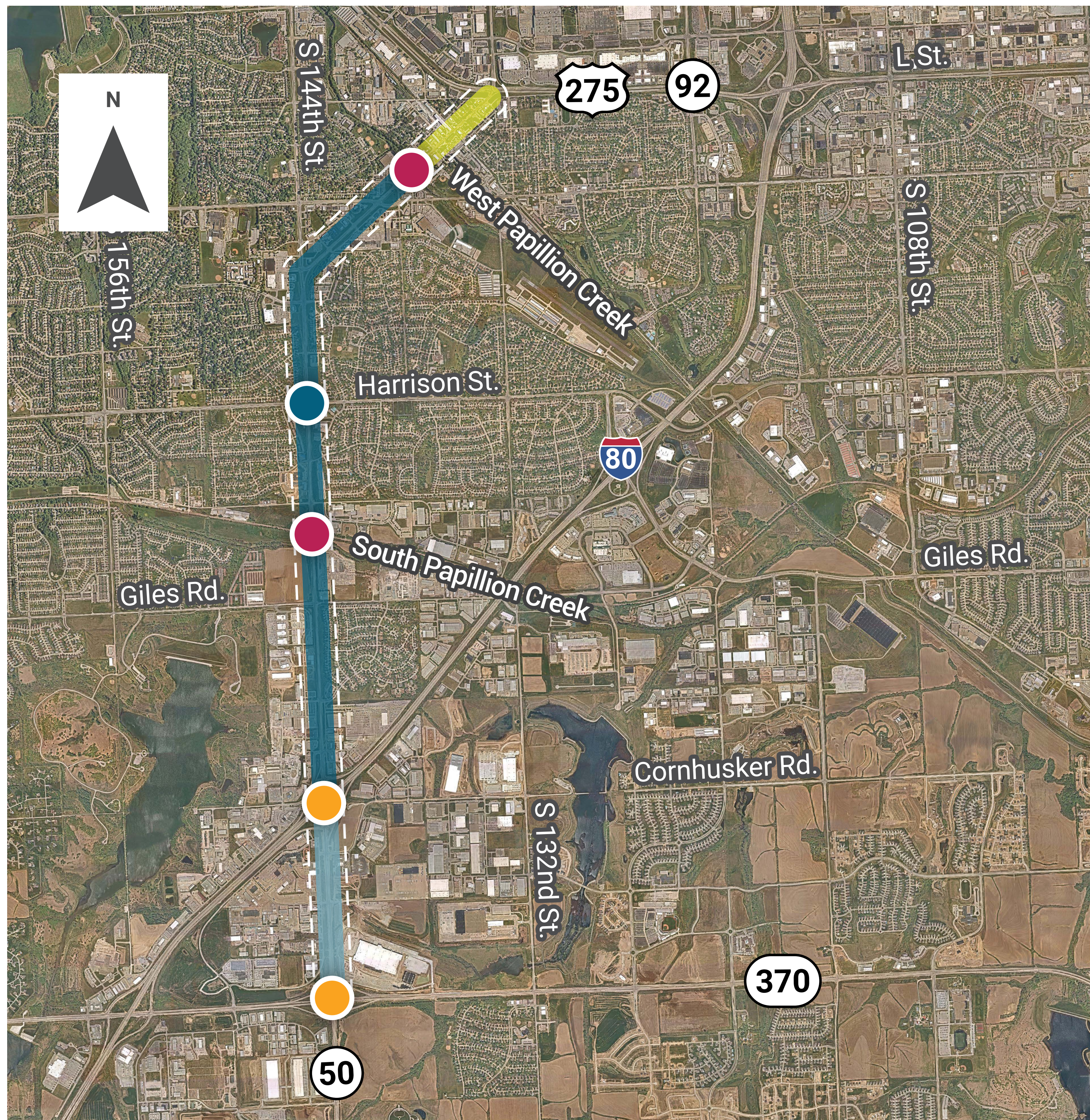
Spring 2023

Anticipated Project Completion

Fall 2024

NH-STP-HSIP-50-2(135) N-370 – Omaha; C.N. 22602

N-50/144th Street & Harrison Intersection



N-50 would be widened along the east side approximately 1,000 feet north & south of the intersection with Harrison Street to include room for two through driving lanes in each direction, two left turn lanes, and a single right turn lane.